

**SPECIFICATIONS**

<b>MAXIMUM SIZE</b>	20 ft. wide, 10 ft. high, 120 sq. ft.
<b>CURTAIN</b>	Interlocking 22 gauge galvanized steel or stainless steel or 18 gauge aluminum Type 'F' flat slat with endlocks riveted to alternate slats
<b>BOTTOM BAR</b>	One 2" x 2" x 1/8" steel, stainless steel or aluminum angle with vinyl bottom seal
<b>GUIDES</b>	Aluminum extrusions with HDPE wear strips, bolted together and to wall with 3/8" fasteners 24" apart
<b>BARREL</b>	4 1/2" min. steel pipe and solid steel shaft with sealed bearing and torsion spring(s) designed for 10,000 operating cycles
<b>BRACKETS</b>	1/8" min. steel plates with sealed bearing on operator side and external tension adjustment wheel
<b>HOOD</b>	24 gauge galvanized steel or stainless steel or 20 gauge aluminum
<b>OPERATION</b>	Steel and stainless steel doors are push-up to 12 ft. wide, 8 ft. high, 84 sq. ft., awning crank on larger sizes - aluminum doors are push-up to 14 ft. wide, 8 ft. high, 96 sq. ft., awning crank on larger sizes
<b>LOCKS</b>	Slide locks on coil side of bottom bar
<b>FINISH</b>	Baked-on primer and top coat on galvanized steel slats and hood - tan opposite coil side/off-white coil side, or grey both sides - shop painted black primer on steel bottom bar, and brackets - brushed finish on stainless steel slats, bottom bar and hood - clear anodized finish on aluminum slats, bottom bar, guides and hood
<b>WARRANTY</b>	One year limited warranty (excluding finish)

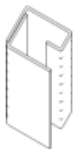
**COMMON OPTIONS**



Extruded aluminum tubular bottom bar with cylinder lock



Steel or stainless steel tubular bottom bar



Formed steel or stainless steel guides

**OTHER OPTIONS**

- Stainless steel counter top
- Vinyl hood baffle
- Guide bottom caps
- Fixed or removable mullions
- Galvanized or powder coat finishes

**CURTAIN & BOTTOM BAR DETAILS**

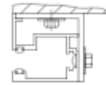


Type 'F' Flat Slat

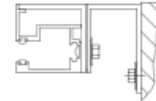


Angle Bottom Bar

**GUIDE DETAILS**

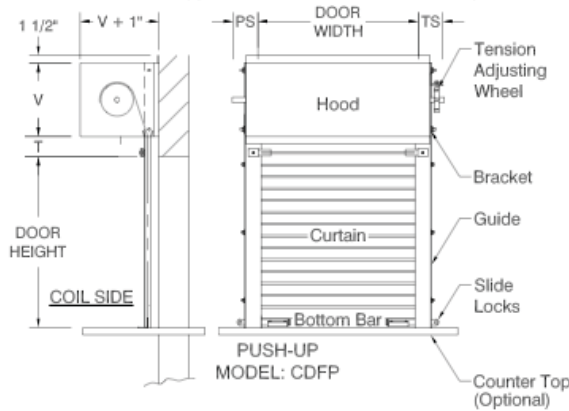


Face Mount



Between Jamb Mount

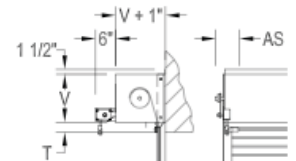
**CLEARANCES** (typical face mount door shown)



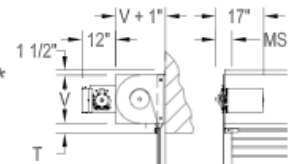
PS	AS	MS	TS
5"	5"	5"	5"

Add 3/4" for face mount to masonry jambs  
 'V' for doors to 6 ft. high is 10"  
 'V' for doors over 7 ft. high is 12"  
 'T' for doors with angle bottom bar is 2"  
 'T' for doors with tubular bottom bar is 4"

AWNING CRANK\*  
 MODEL: CDFA



MOTOR OPERATOR\*  
 MODEL: CDFM



**GENERAL NOTES:**

Clearances are based upon standard door construction. Reduced clearances may be available. Some options may require additional clearance. Shop drawings for specific applications are available. Consult factory for any information not shown.

\* Available as an option



903 Jan Mar Court, Minneola, FL 34715  
**Toll Free 1(800) 357-DOOR (3667)**  
 www.commercialdoorsdirect.com