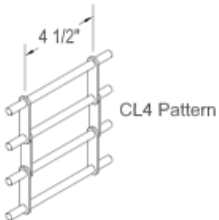


SPECIFICATIONS

MAXIMUM SIZE	20 ft. wide, 8 ft. high, 100 sq. ft.
CURTAIN	CL9 straight link pattern with 5/16" horizontal aluminum rods on 2" centers, vertical chains formed from single 1/8" aluminum 2-hole links on 9" centers, aluminum spacer tubes between links on every 6th rod, retaining rings on ends of rods
BOTTOM BAR	Rectangular aluminum extrusion
GUIDES	Aluminum extrusions with polyester pile wear strip, field adjustable lock bar heights
BARREL	4 1/2" min. steel pipe and solid steel shaft with sealed bearing and torsion spring(s) designed for 10,000 operating cycles
BRACKETS	1/8" min. steel plates with sealed bearing on operator side and external tension adjustment wheel
HOOD	20 gauge aluminum
OPERATION	Push-up to 14 ft. wide, awning crank on larger sizes
LOCKS	Single cylinder or guarded thumb-turn on coil side or opposite coil side of bottom bar to activate double throw-bolt lock
FINISH	Mill finish aluminum curtain, clear anodized aluminum bottom bar, guides and hood, shop painted black primer on steel brackets
WARRANTY	One year limited warranty (excluding finish)

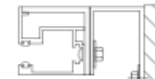
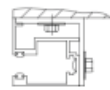
COMMON OPTIONS



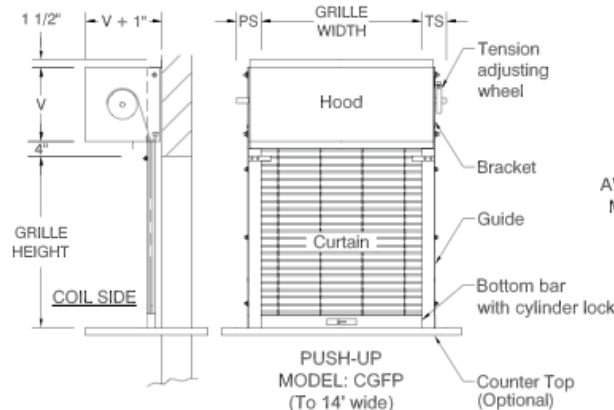
CURTAIN & BOTTOM BAR DETAILS



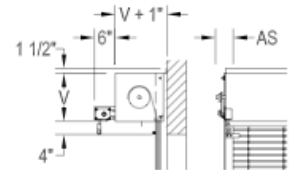
GUIDE DETAILS



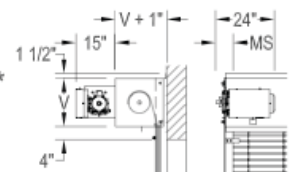
CLEARANCES (typical face mount grille shown)



AWNING CRANK*
MODEL: CGFA



MOTOR OPERATOR*
MODEL: CGFM



OTHER OPTIONS

- Vinyl bottom seal
- Guide bottom caps
- Cylinder locks on coil side and opposite coil side
- Stainless steel
- Clear, bronze, or color anodized finishes
- Powder coat finish (bottom bar, guides & hood)

PS	AS	MS	TS
5"	5"	5"	5"

"V" for grilles to 3 ft. high is 10"
 "V" for grilles over 3 ft. to 6 ft. high is 12"
 "V" for grilles over 6 ft. high is 15"

GENERAL NOTES:

Clearances are based upon standard counter grille construction. Reduced clearances may be available. Some options may require additional clearance. Shop drawings for specific applications are available. Consult factory for any information not shown.

* Available as an option



903 Jan Mar Court, Minneola, FL 34715
Toll Free 1(800) 357-DOOR (3667)
 www.commercialdoorsdirect.com

© 2012 Commercial Doors Direct.

Commercial Doors Direct. reserves the right to change specifications without notice. Refer to Standard Specifications sheet