

SPECIFICATIONS

CURTAIN	Interlocking galvanized steel Type '3I' flat slats - 22 gauge to 16 ft. wide, 20 gauge over 16 ft. - insulated with EPS foam and covered with 24 gauge galvanized steel backslates pressure fit and bonded to the slats, with endlocks riveted to alternate slats and windlocks riveted to slats when required by 20 PSF windload design
BOTTOM BAR GUIDES	Two 2" x 2" x 1/8" min. steel angles with vinyl weatherstrip Formed 3/16" steel U-channel guides and 3/16" min. steel wall angles bolted together and to wall with 3/8" fasteners 24" apart, with vinyl weatherstrip
BARREL	6 5/8" min. steel pipe and solid steel shaft with sealed precision bearing and torsion spring(s) designed for 50,000 operating cycles (20,000 cycles on doors over 30 ft. wide, 16 ft. high)
BRACKETS	3/16" min. steel plates with sealed precision bearing on operator side and external tension adjustment wheel
HOOD	24 gauge min. galvanized steel, with vinyl weather baffle
OPERATION	Chain hoist with cast iron reduction gears
LOCKS	Slide locks on coil side of bottom bar
FINISH	Baked-on primer and top coat on slats, backslates and hood - tan opposite coil side / off-white coil side, or grey both sides - shop painted black primer on steel bottom bar, guides and brackets
WARRANTY	Two year limited warranty (excluding finish)

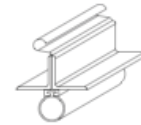
COMMON OPTIONS



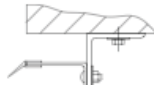
OTHER OPTIONS

- Designs for up to 100,000 operating cycles
- Aluminum or stainless steel doors
- Heavier gauge slats and backslates
- Tubular bottom bar with cylinder locks
- Sloping or irregular shaped bottom bars
- Galvanized or powder coat finishes

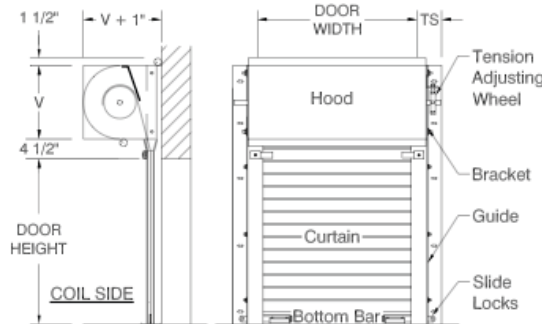
CURTAIN & BOTTOM BAR DETAILS



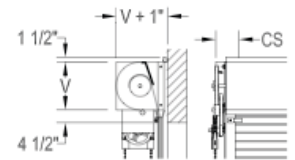
GUIDE DETAILS



CLEARANCES (typical face mount door shown)



CHAIN HOIST MODEL: HIFC



MOTOR OPERATOR MODEL: HIFM*

Clearances shown are for doors to 20ft. wide, 16ft. high
Consult factory for clearances on larger doors

CS	MS	TS
8"	7"	7"

- 'V' for doors to 7 ft. high is 15"
- 'V' for doors over 7 ft. to 11 ft. high is 17"
- 'V' for doors over 11 ft. to 15 ft. high is 19"
- 'V' for doors over 15 ft. high is 21"

GENERAL NOTES:

Clearances are based upon standard door construction. Reduced clearances may be available. Some options may require additional clearance. Shop drawings for specific applications are available. Consult factory for any information not shown.

* Available as an option



903 Jan Mar Court, Minneola, FL 34715
Toll Free 1(800) 357-DOOR (3667)
www.commercialdoorsdirect.com

© 2012 Commercial Doors Direct.

Commercial Doors Direct. reserves the right to change specifications without notice. Refer to Standard Specifications sheet