

SPECIFICATIONS

MAXIMUM SIZE CURTAIN	20 ft. wide, 16 ft. high Interlocking galvanized steel Type 'T' flat slats - 24 gauge to 16 ft. wide, 22 gauge over 16 ft. wide - insulated with EPS foam and covered with pressure-fit PVC backslates, with endlocks riveted to alternate slats, designed to withstand a 20 PSF windload
BOTTOM BAR GUIDES	T-shape aluminum extrusion to 16 ft. wide, two steel angles over 16 ft. wide, with vinyl weatherstrip Formed 11 gauge steel U-channel guides and 3/16" steel wall angles bolted together and to wall with 3/8" fasteners 24" apart, with vinyl weatherstrip
BARREL BRACKETS	4 1/2" min. steel pipe and solid steel shaft with sealed bearing and torsion spring(s) designed for 20,000 operating cycles
HOOD	3/16" min. steel plates with sealed bearing on operator side and external tension adjustment wheel
OPERATION	24 gauge galvanized steel, with vinyl weather baffle
LOCKS	Chain hoist with cast iron reduction gears
FINISH	Slide locks on coil side of bottom bar
WARRANTY	Baked-on primer and tan or grey top coat on slats and hood, tan color PVC backslates, clear anodized aluminum bottom bar, shop painted black primer on steel bottom bar, guides and brackets One year limited warranty (excluding finish)

COMMON OPTIONS



Vision windows



High security guide mounted lock



Pedestrian pass door

OTHER OPTIONS

- Heavier gauge slats
- Tubular bottom bar with cylinder locks
- Sloping or irregular shaped bottom bars
- Galvanized or powder coat finishes

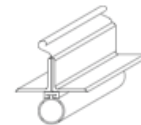
CURTAIN & BOTTOM BAR DETAILS



Type 'T' Insulated Flat Slat

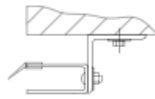


Aluminum Bottom Bar

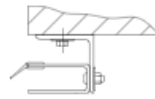


Steel Angle Bottom Bar

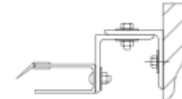
GUIDE DETAILS



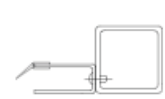
Type 'Z' Guide



Type 'E' Guide

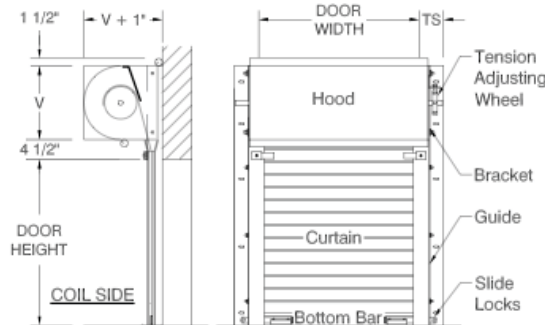


Between Jamb Guide



Tube Mount Guide*

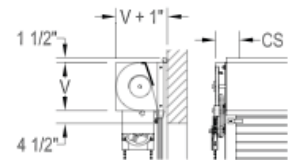
CLEARANCES (typical face mount door shown)



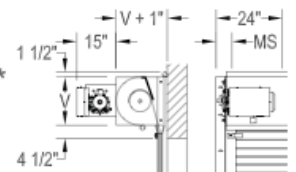
CS	MS	TS
8"	7"	7"

'V' for doors to 7 ft. high is 15"
 'V' for doors over 7 ft. to 11 ft. high is 17"
 'V' for doors over 11 ft. to 15 ft. high is 19"
 'V' for doors over 15 ft. high is 21"

CHAIN HOIST
MODEL: MIFC



MOTOR OPERATOR*
MODEL: MIFM



GENERAL NOTES:

Clearances are based upon standard door construction. Reduced clearances may be available. Some options may require additional clearance. Shop drawings for specific applications are available. Consult factory for any information not shown.

* Available as an option



903 Jan Mar Court, Minneola, FL 34715
Toll Free 1(800) 357-DOOR (3667)
 www.commercialdoorsdirect.com

© 2012 Commercial Doors Direct.

Commercial Doors Direct.. reserves the right to change specifications without notice. Refer to Standard Specifications sheet