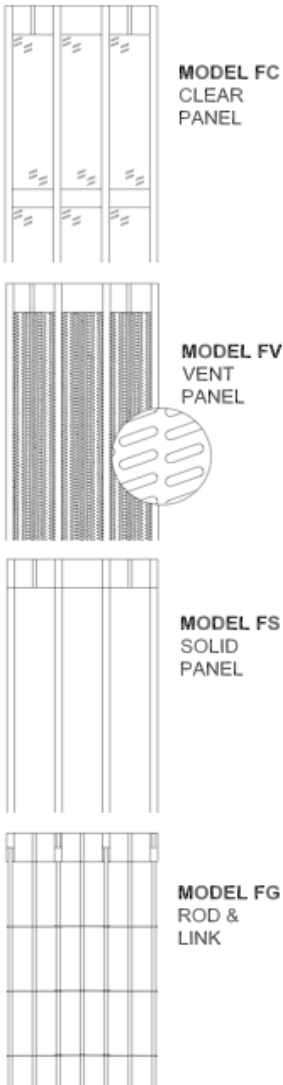


SPECIFICATIONS

MAXIMUM SIZE CURTAIN	30 ft. wide, 12 ft. high (consult factory for larger sizes)
POSTS LOCKS	Folding 6 1/2" wide extruded aluminum panels interconnected with integral continuous vertical hinges Model FO [ST-12] - panels divided by vertical aluminum rods and horizontal stiffeners in a 2 5/16" wide, 12" high open pattern Model FC [LXS] - panels with clear polycarbonate glazing inserts to provide a closed panel with visibility Model FV [PFS] - panels with 3/16" x 3/4" diagonal perforations on staggered centers to provide 50% visibility and ventilation Model FS [SFS] - panels fabricated from solid aluminum Model FG [S-17] - horizontal links interconnected with vertical rods in a 3" wide, 12" high pattern
TOP TRACK ROLLERS	Rectangular aluminum extrusion connected to lead and rear panels and intermediately every 10 ft. (and corners as required) Cylinder activated hook lock in lead post with full height wall strike; cylinder activated bottom throw-bolt lock in receiver and intermediate posts (when provided) with floor strike; self-locking tailing edge on rear post engages floor & ceiling stop
FINISH	Extruded aluminum, 1 3/4" x 1 5/8" x 1/8" thick with steel connection plate/pins at each splice
WARRANTY	Non-metallic 1 1/8" double-wheeled ball bearing rollers Mill finish (FG), clear anodized (FO, FC, FV, FS) aluminum curtain, posts and top track One year limited warranty (excluding finish)

NOTE: original AlumaTek models shown in [] for reference

ALTERNATE MODELS

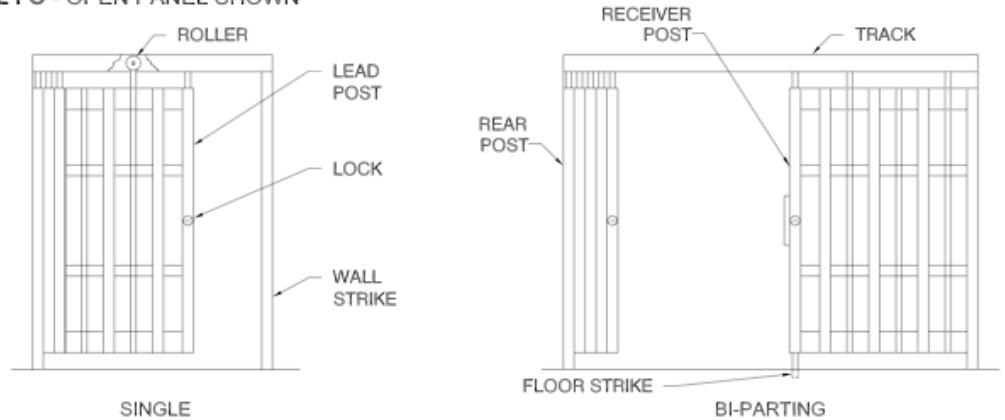


COMMON OPTIONS

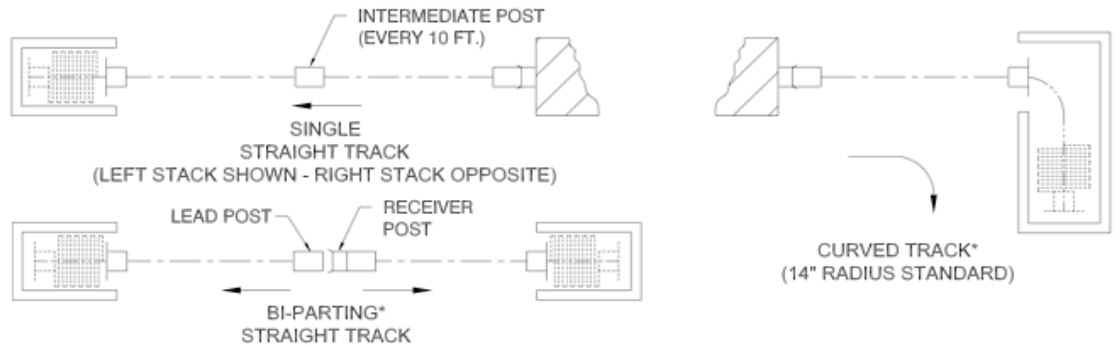
- Clear or bronze anodized finish
- Special cylinders
- Curved tracks
Single or compound curves
90°, 45°, 30° or custom radius

CLOSURE DETAILS

MODEL FO - OPEN PANEL SHOWN

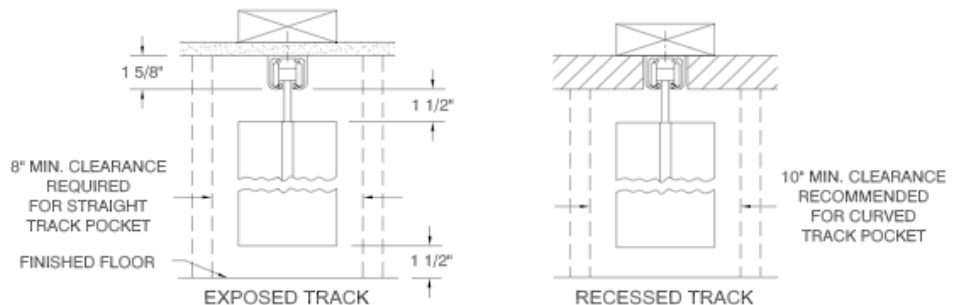


MOUNTING DETAILS



CLEARANCES:
Allow approximately 2" per ft. of width for stacking clearance.
*AVAILABLE AS AN OPTION

TRACK DETAILS



903 Jan Mar Court, Minneola, FL 34715
Toll Free 1(800) 357-DOOR (3667)
www.commercialdoorsdirect.com

© 2012 Commercial Doors Direct.

Commercial Doors Direct. reserves the right to change specifications without notice. Refer to Standard Specifications sheet